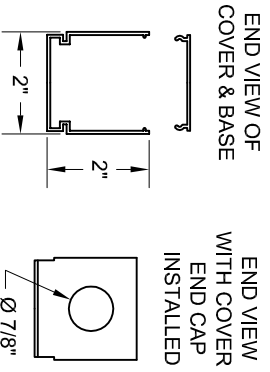
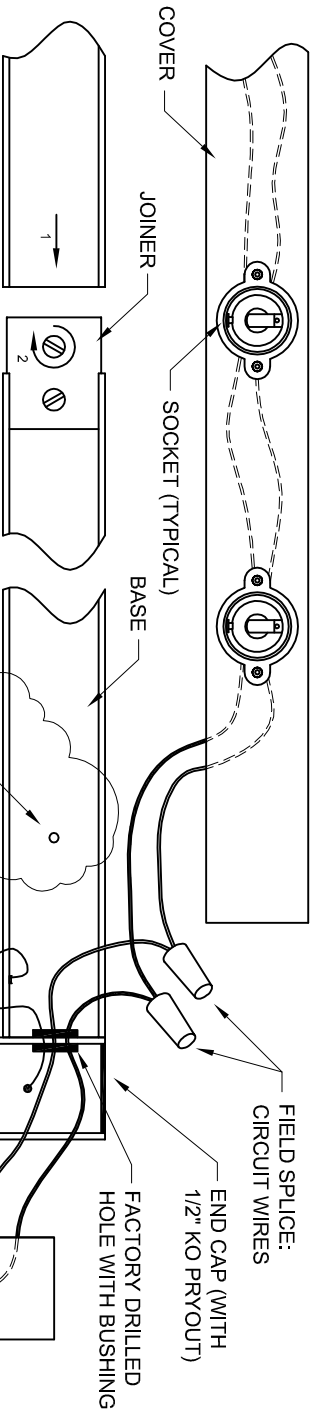


NOTE: THE DIAGRAM TO THE RIGHT IS AN EXAMPLE OF A TYPICAL INSTALLATION. YOUR LAYOUT MAY VARY, BUT THE METHODS ARE THE SAME.

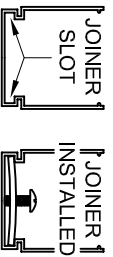


NOTE: COVERS CAN BE EASILY PRIED OFF WITH A SCREWDRIVER. START AT ONE END & WORK SCREWDRIVER TOWARDS OTHER END. GENTLY LIFTING COVER AS YOU GO.

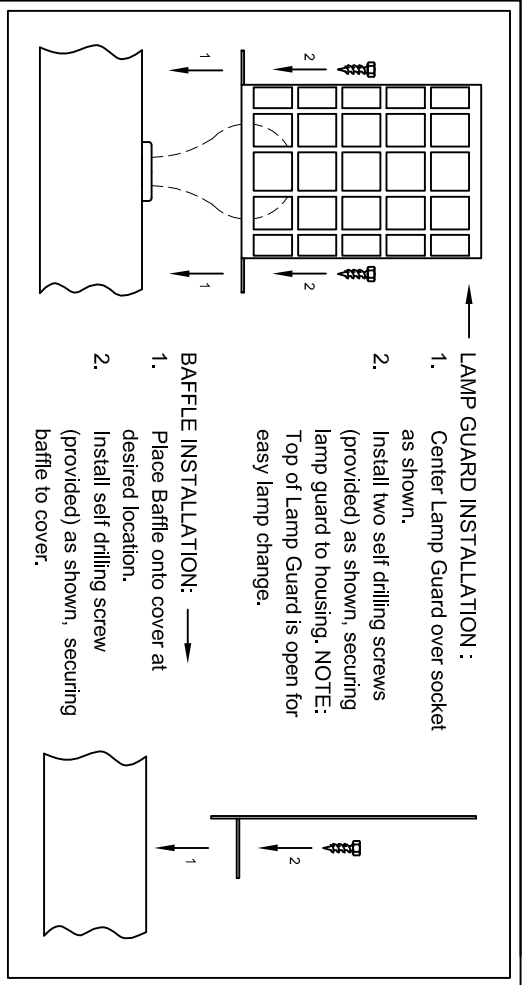


STRAIGHT SECTION CONNECTION:

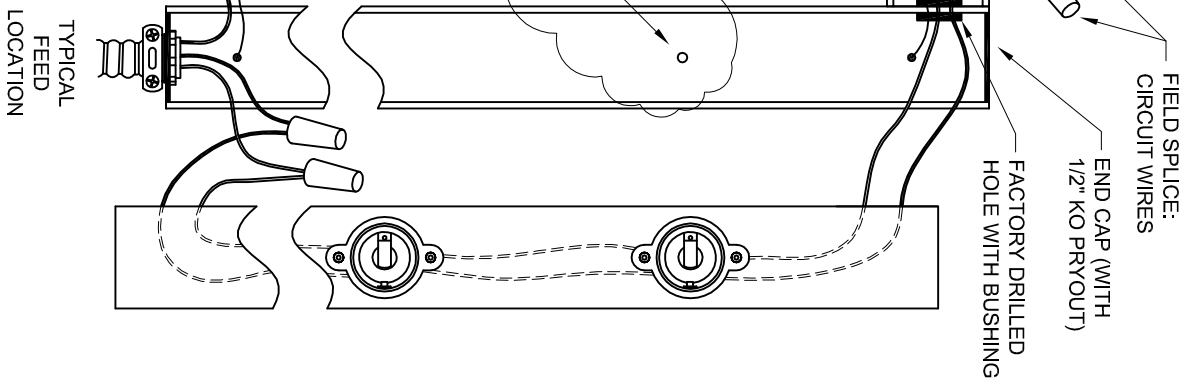
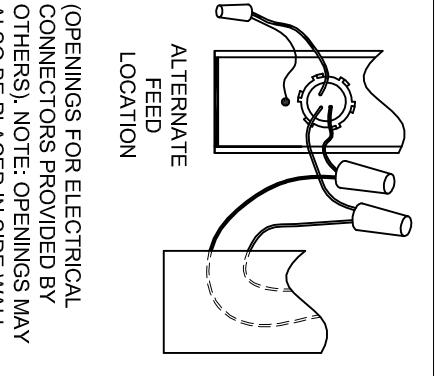
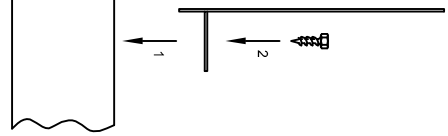
1. Slide base onto joiner using slot in lower end.
2. Tighten set screw until snug (Joiner will bend slightly).



MOUNTING HOLES ARE TO BE MADE IN THE FIELD. MOUNTING MEANS & MOUNTING HARDWARE TO BE DETERMINED BY OTHERS. MOUNTING HARDWARE PROVIDED BY OTHERS.



- LAMP GUARD INSTALLATION:**
1. Center Lamp Guard over socket as shown.
 2. Install two self drilling screws (provided) as shown, securing lamp guard to housing. NOTE: Top of Lamp Guard is open for easy lamp change.



THIS DRAWING IS THE PROPERTY OF TIMES SQUARE LIGHTING, INC. ANY UNAUTHORIZED USE IS PROHIBITED. SPECIFICATIONS SUBJECT TO CHANGE WITHOUT NOTICE. COPYRIGHT © TIMES SQUARE LIGHTING, INC. 2011. ALL RIGHTS RESERVED.

REV	DATE	DESCRIPTION	BY
-	-	-	-
-	-	-	-
-	-	-	-
-	-	-	-
-	-	-	-



TIMES SQUARE LIGHTING INC.
 5 HOLT DR., STONY POINT, NY 10980
 845-947-3034 FAX: 845-947-3047

DRAWING TITLE:	FILE: 07M template
07M INSTALLATION DIAGRAM	DWG BY: TPT APPR: -
PROJECT:	DATE: 11-27-12
-	SCALE: none SHEET: 1 OF 1
-	TSL P/N REV: -