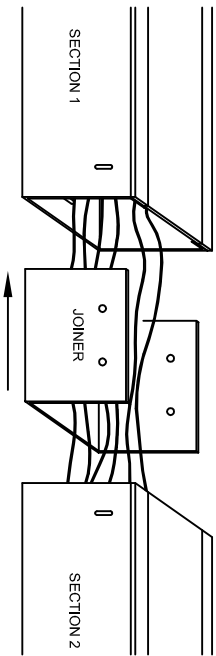
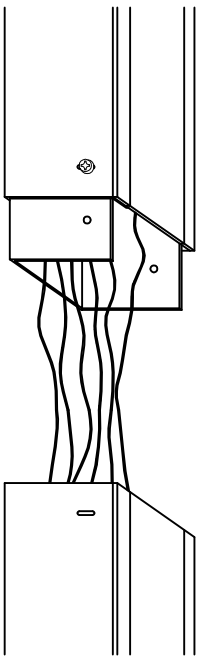


## JOINING CONNECTOR STRIP SECTIONS

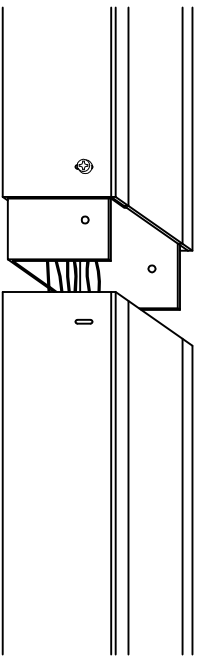
STEP 1: INSTALL JOINER TO SECTION 1 SUCH THAT JOINER SLEEVE NUTS LINE UP WITH SECTION 1 SLOTS.



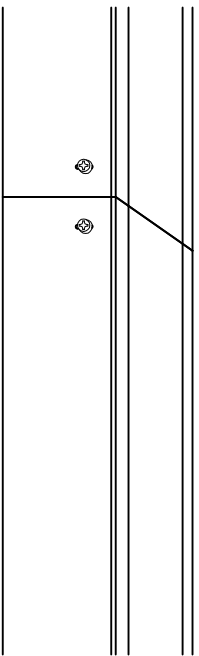
STEP 2: ATTACH JOINER TO FIRST SECTION WITH 3 SCREWS PROVIDED. DO NOT TIGHTEN SCREWS UNTIL LAST STEP.



STEP 3: CAREFULLY FOLD EXCESS WIRE INTO CONNECTOR STRIP SECTIONS AND INSTALL SECTION 2 TO JOINER, TAKING CARE NOT TO PINCH ANY WIRES.



STEP 4: SECURE SECTION 2 TO JOINER SLEEVE WITH 3 REMAINING SCREWS. COMPLETELY TIGHTEN ALL 6 SCREWS. REPEAT FOR SUBSEQUENT SECTIONS.

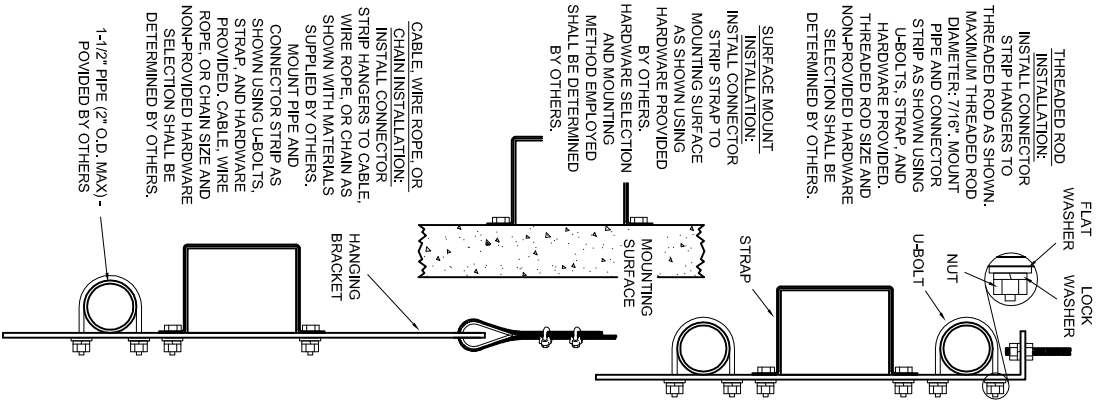


## HANGING/MOUNTING CONNECTOR STRIP

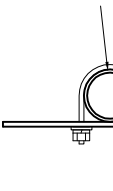
NOTE: CONNECTOR STRIP WEIGHS APPROXIMATELY 4 LBS/FT (6 kg/m)

**THREADED ROD INSTALLATION:**  
INSTALL CONNECTOR STRIP HANGERS TO THREADED ROD AS SHOWN. MAXIMUM THREADED ROD DIAMETER: 7/16". MOUNT PIPE AND CONNECTOR STRIP AS SHOWN USING U-BOLTS, STRAP, AND HARDWARE PROVIDED. THREADED ROD SIZE AND NON-PROVIDED HARDWARE SELECTION SHALL BE DETERMINED BY OTHERS.

**SURFACE MOUNT INSTALLATION:**  
INSTALL CONNECTOR STRIP STRAP TO MOUNTING SURFACE AS SHOWN USING HARDWARE PROVIDED BY OTHERS. HARDWARE SELECTION AND MOUNTING METHOD EMPLOYED SHALL BE DETERMINED BY OTHERS.

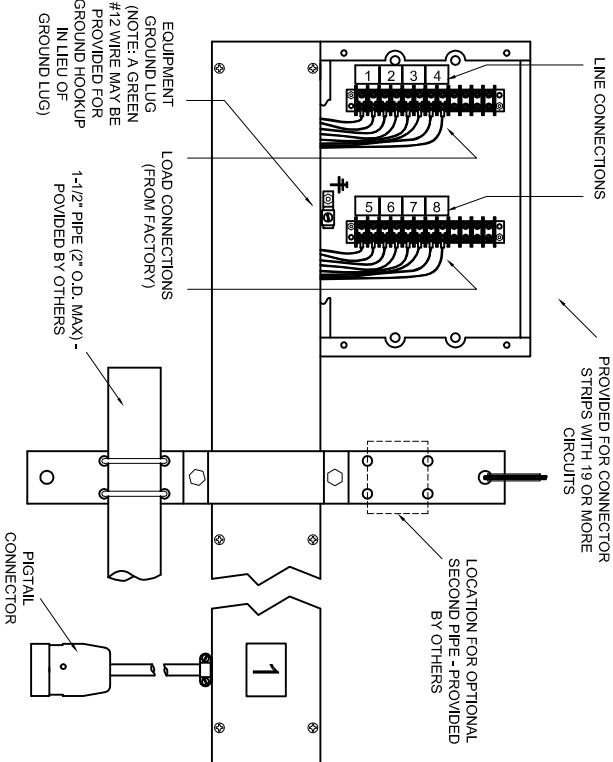


**CABLE, WIRE ROPE, OR CHAIN INSTALLATION:**  
INSTALL CONNECTOR STRIP HANGERS TO CABLE, WIRE ROPE, OR CHAIN AS SHOWN WITH MATERIALS SUPPLIED BY OTHERS. MOUNT PIPE AND CONNECTOR STRIP AS SHOWN USING U-BOLTS, STRAP, AND HARDWARE PROVIDED. CABLE, WIRE ROPE, OR CHAIN SIZE AND NON-PROVIDED HARDWARE SELECTION SHALL BE DETERMINED BY OTHERS.

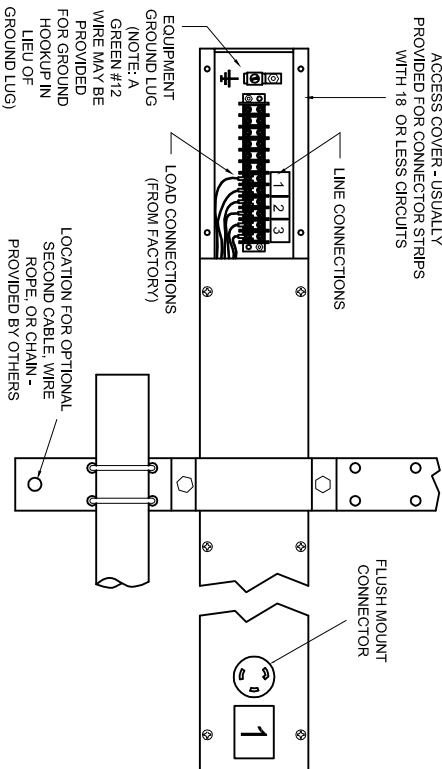


## MAKING ELECTRICAL CONNECTIONS

JUNCTION BOX WITH REMOVABLE COVER - USUALLY PROVIDED FOR CONNECTOR STRIPS WITH 19 OR MORE CIRCUITS



END SECTION WITH REMOVABLE ACCESS COVER - USUALLY PROVIDED FOR CONNECTOR STRIPS WITH 18 OR LESS CIRCUITS



THIS DRAWING IS THE PROPERTY OF TIMES SQUARE LIGHTING, INC. ANY UNAUTHORIZED USE IS PROHIBITED. SPECIFICATIONS SUBJECT TO CHANGE WITHOUT NOTICE. COPYRIGHT © TIMES SQUARE LIGHTING, INC. 2012. ALL RIGHTS RESERVED.

REV	DATE	DESCRIPTION	BY
-	-	-	-
-	-	-	-
-	-	-	-
-	-	-	-
-	-	-	-



**TIMES SQUARE LIGHTING INC.**

5 HOLT DR., STONY POINT, NY 10980  
845-947-3034 FAX: 845-947-3047

DRAWING FILE:

FILE: CS Inst'r sheet

CONNECTOR STRIP CONSTRUCTION AND INSTALLATION INSTRUCTIONS

PROJECT: -

DWG. BY:	TPT	APPR:
DATE:	10-01-10	
SCALE:	none	SHEET 1 OF 1
TSL P/N:		REV: -