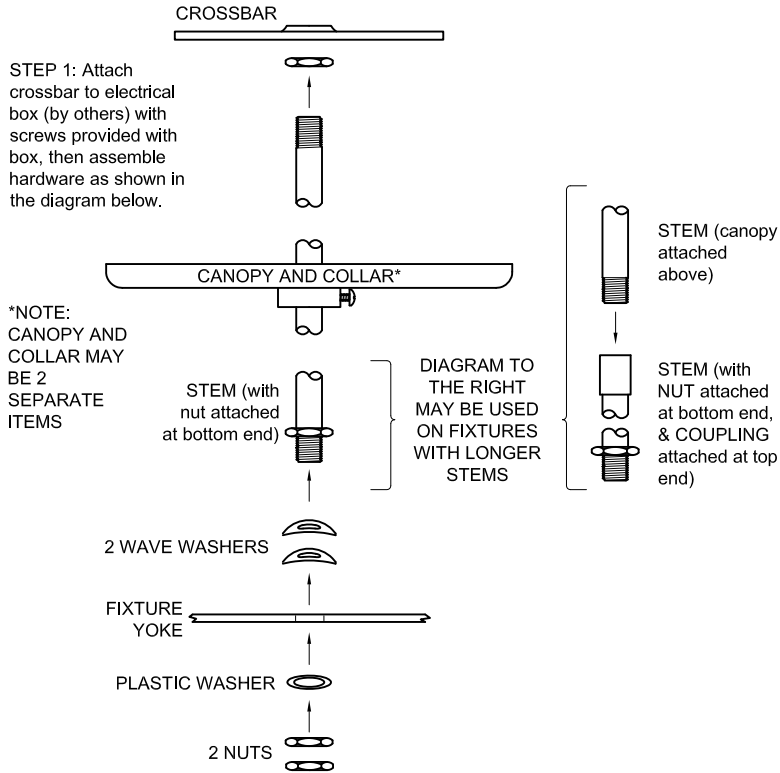
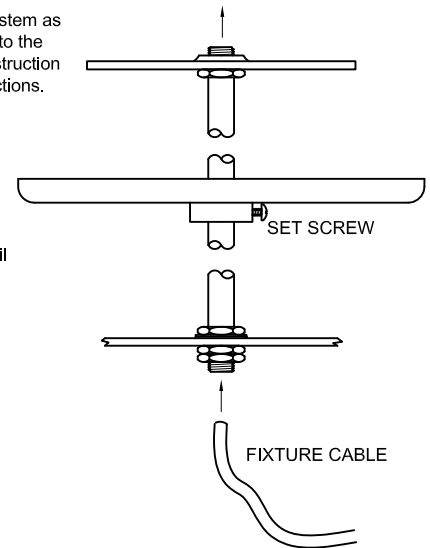


FIXTURE / STEM / GENERIC CANOPY ASSEMBLY INSTRUCTIONS



STEP 2:
Thread cable through stem as shown in the diagram to the right. See separate instruction sheet for wiring instructions.

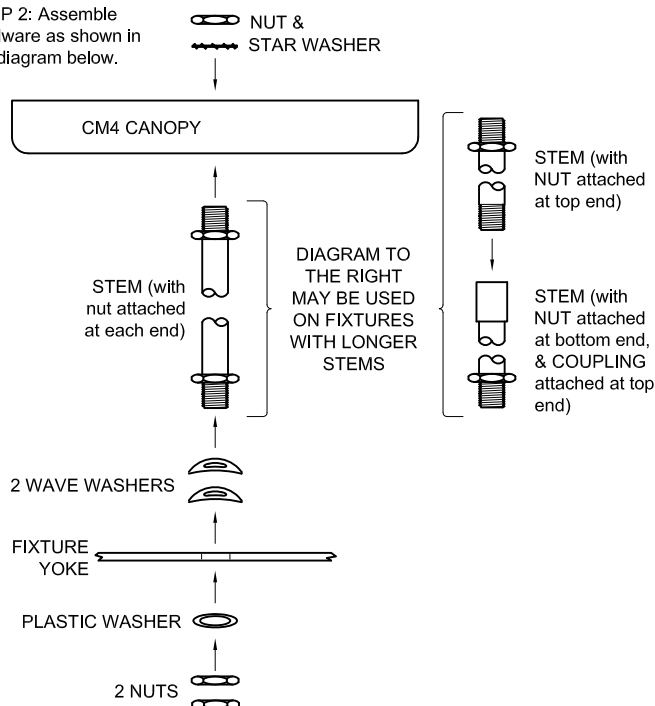
STEP 3:
Carefully slide canopy and collar up stem until flush with mounting surface. Tighten set screw.



FIXTURE / STEM / CM4 CANOPY ASSEMBLY INSTRUCTIONS

STEP 1: Attach Adapter Plate to electrical box using the instruction sheet supplied with the Adapter Plate.

STEP 2: Assemble hardware as shown in the diagram below.



STEP 3:
Thread cable through stem as shown in the diagram to the right. See separate instruction sheet for wiring fixture to electrical supply.

STEP 4:
Mount the canopy using the instruction sheet supplied with the Adapter Plate.

