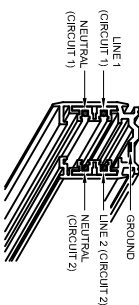
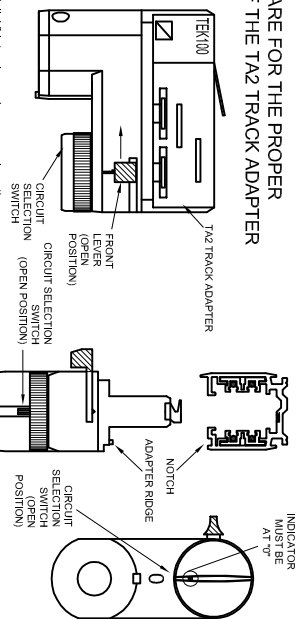


TA2 THESE INSTRUCTIONS ARE FOR THE PROPER INSTALLATION & USE OF THE TA2 TRACK ADAPTER

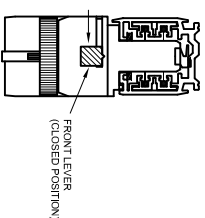
TWO CIRCUIT 120V TRACK WITH INDEPENDANT NEUTRALS



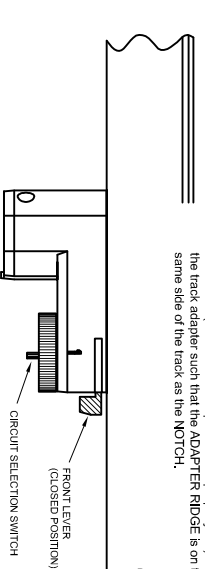
STEP 1: Place the **FRONT LEVER** in the **OPEN POSITION** (It will "click" into place when properly set).



STEP 2: Place the **CIRCUIT SELECTION SWITCH** in the **OPEN POSITION** (It will "click" into place when properly set). Align the track adapter such that the **ADAPTER RIDGE** is on the same side of the track as the **NOTCH**.



STEP 3: Insert track adapter into track with one hand, and fully rotate the **FRONT LEVER** to the **CLOSED POSITION** with the other hand (It will "click" into place when properly set). **CAUTION:** Make certain that the **FRONT LEVER** is fully closed before letting go of the track adapter!

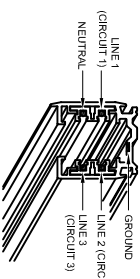


STEP 4: Rotate the **CIRCUIT SELECTION SWITCH** to select the intended circuit for the adapter. Clockwise for circuit 2, counter-clockwise for circuit 1 (It will "click" into place when properly set). **NOTE:** The **CIRCUIT SELECTION SWITCH** cannot be rotated until the **FRONT LEVER** is in the **CLOSED POSITION**.

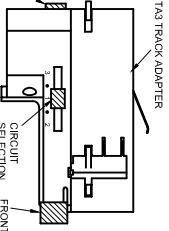
ADAPTER REMOVAL: Rotate the **CIRCUIT SELECTION SWITCH** and the **FRONT LEVER** to their respective **OPEN POSITIONS** in that order, then pull out of track, first from the side containing the **CIRCUIT SELECTION SWITCH**.

TA3 THESE INSTRUCTIONS ARE FOR THE PROPER INSTALLATION & USE OF THE TA3 TRACK ADAPTER

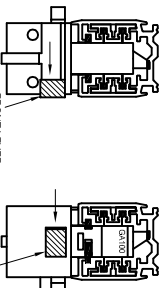
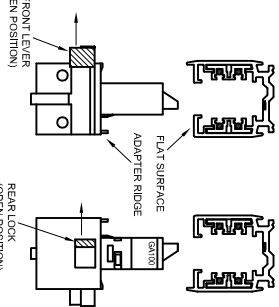
THREE CIRCUIT 120V TRACK WITH COMMON NEUTRAL



STEP 1: **NOTE:** This step can be performed at any time during adapter installation. It need not be the first step although in some instances, moving this switch after installation may be more difficult. Select the intended circuit for the adapter using the **CIRCUIT SELECTION SWITCH**. **NOTE:** The positions indicated by the tools between the numbers are "off" positions.



STEP 2: Place **FRONT LEVER** and the **REAR LOCK** in the **OPEN POSITION** (they will "click" into place when properly set). Align the track adapter such that the **ADAPTER RIDGE** is on the same side of the track as the **FLAT SURFACE**.



STEP 3: Insert track adapter into track with one hand, and fully rotate the **REAR LOCK** and **FRONT LEVER** to their respective **CLOSED POSITIONS** with the other hand (they will "click" into place when properly set). **CAUTION:** Make certain that the **REAR LOCK** and the **FRONT LEVER** are fully closed before letting go of the track adapter!

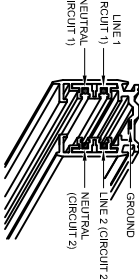


At any time the **CIRCUIT SELECTION SWITCH** can be changed to a different circuit. The adapter need not be removed to change circuits. **NOTE:** The positions indicated by the "dots" between the numbers are "off" positions.

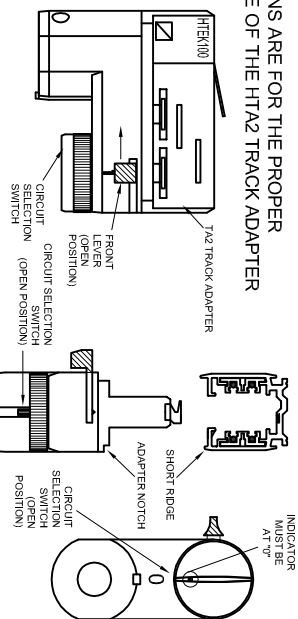
ADAPTER REMOVAL: Rotate the **REAR LOCK** and the **FRONT LEVER** to their respective **OPEN POSITIONS**, then pull out of track.

HTA2 THESE INSTRUCTIONS ARE FOR THE PROPER INSTALLATION & USE OF THE HTA2 TRACK ADAPTER

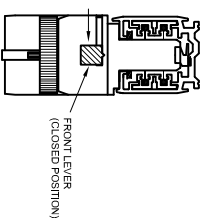
TWO CIRCUIT 277V TRACK WITH INDEPENDANT NEUTRALS



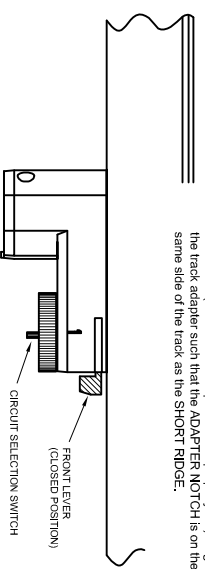
STEP 1: Place the **FRONT LEVER** in the **OPEN POSITION** (It will "click" into place when properly set).



STEP 2: Place the **CIRCUIT SELECTION SWITCH** in the **OPEN POSITION** (It will "click" into place when properly set). Align the track adapter such that the **ADAPTER NOTCH** is on the same side of the track as the **SHORT RIDGE**.



STEP 3: Insert track adapter into track with one hand, and fully rotate the **FRONT LEVER** to the **CLOSED POSITION** with the other hand (It will "click" into place when properly set). **CAUTION:** Make certain that the **FRONT LEVER** is fully closed before letting go of the track adapter!

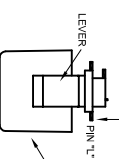
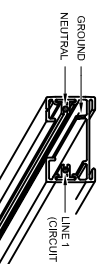


STEP 4: Rotate the **CIRCUIT SELECTION SWITCH** to select the intended circuit for the adapter. Clockwise for circuit 2, counter-clockwise for circuit 1 (It will "click" into place when properly set). **NOTE:** The **CIRCUIT SELECTION SWITCH** cannot be rotated until the **FRONT LEVER** is in the **CLOSED POSITION**.

ADAPTER REMOVAL: Rotate the **CIRCUIT SELECTION SWITCH** and the **FRONT LEVER** to their respective **OPEN POSITIONS** in that order, then pull out of track, first from the side containing the **CIRCUIT SELECTION SWITCH**.

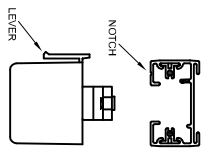
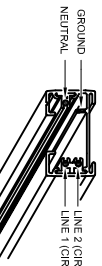
G1 THESE INSTRUCTIONS ARE FOR THE PROPER INSTALLATION & USE OF THE G1 TRACK ADAPTER

SINGLE CIRCUIT 120V TRACK

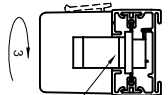
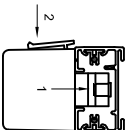


STEP 1: With a screwdriver or pliers, push **PIN 'L'** down for circuit 1, or up for circuit 2. **NOTE:** Single circuit track is always circuit 1. **CAUTION:** Forcing a track adapter into single circuit track when it is set up for circuit 2 will damage both the track and the adapter!

TWO CIRCUIT 120V TRACK WITH COMMON NEUTRAL



STEP 2: Align the track adapter such that the **LEVER** is on the same side of the track as the **NOTCH**.



STEP 3: Insert track adapter into track, squeeze **LEVER**, and rotate adapter 90° clockwise. Release the **LEVER** and insure that the **LEVER TOP** is fully positioned inside the track channel. This will lock the track adapter in place.