

LINEAR CURRENT LIMITER INSTALLATION INSTRUCTIONS

CAUTION: This product is to be installed according to national and local electrical codes and by qualified personnel only!

CAUTION: Disconnect power before installing this equipment!

NOTE: Refer to Diagram #1 for parts identification.


STEP 1: Remove current limiter cover and set screws and cover aside.

STEP2: If the current limiter is to be installed in a track sleeve, there will be a mounting screw taped to the inside of the current limiter. Remove it and set it aside.

STEP 3: Install current limiter base directly to junction box using hardware by others (Diagram #2), OR install with hardware by others using 1/2" knockouts provided to attach armored cable, conduit, or other approved means of supplying power (Diagrams #3, #4 or #5, e.g.),

OR install to track sleeve using the screw set aside from STEP 2 (Diagram #6).

STEP 4: Remove the grey wire cover and set screw and cover aside.

STEP 5: Connect system ground to grounding screw terminal (indicated by GREEN screw or .

STEP 6: Connect the neutral feeder wire(s) to the silver screw terminal(s) of the current limiter.

STEP 7: Reattach the grey wire cover removed from STEP 4.

STEP 8: Connect the hot feeder wire(s) to the black wire(s) of the current limiter. Use the wire nut(s) provided. **CAUTION:** On 2 circuit units with separate neutrals, make certain that the circuit 1 hot is paired with circuit 1 neutral!

STEP 9: Reattach current limiter cover.

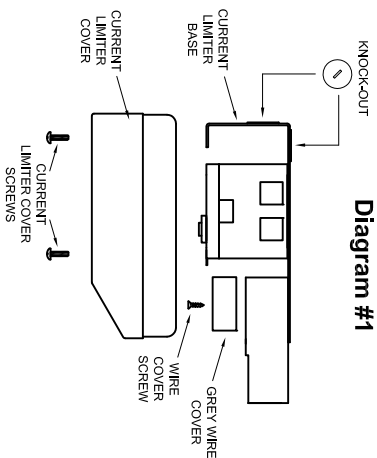


Diagram #1

Diagram #2

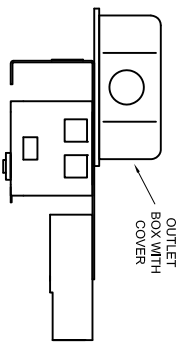


Diagram #3

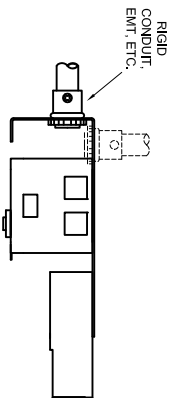


Diagram #4

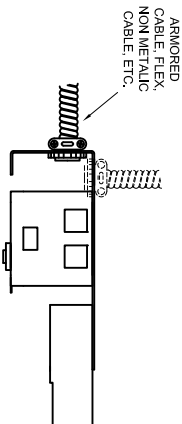


Diagram #5

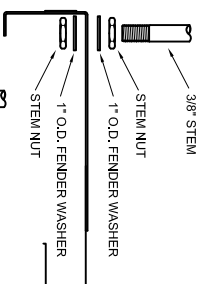


Diagram #6

