

Manufactured in the USA - IBEW

PRODUCT LISTED  
BY A NATIONALLY  
RECOGNIZED  
TESTING  
LABORATORY

## Features

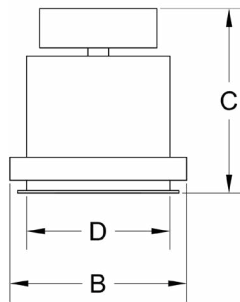
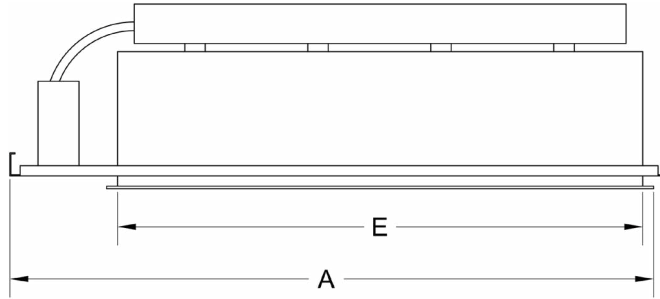
- Accepts PAR38 lamps and LEDs
- Available in 1 to 5-light - linear, square and corner configurations
- Blends into the ceiling and can be installed with or without trim
- Each lamp is individually mounted for pan and tilt.
- Lamp holders accept a variety of lenses and accessories
- Easy front re-lamping
- Thermal protector
- Adjustable trim with torsion springs for ceilings up to 2" thick
- Adjustable butterfly mounting brackets included
- Fully enclosed wiring compartment
- Black, white and silver trims available - custom colors upon request
- 120-volt

# 38R PAR38

## Specification Sheet - New Construction



5 Holt Drive,  
Stony Point, NY 10980  
845-947-3034  
info@tslight.com



Model #	Length	Width	Height	Ceiling Cut-Out	
	(A)	(B)	(C)	(D)	(E)
38R-1	14 <sup>3</sup> / <sub>8</sub> "	8 <sup>1</sup> / <sub>2</sub> "	9"	6 <sup>7</sup> / <sub>8</sub> "	8"
38R-2	21 <sup>3</sup> / <sub>8</sub> "	8 <sup>1</sup> / <sub>2</sub> "	9"	6 <sup>7</sup> / <sub>8</sub> "	13 <sup>7</sup> / <sub>8</sub> "
38R-3	28 <sup>1</sup> / <sub>4</sub> "	8 <sup>1</sup> / <sub>2</sub> "	9"	6 <sup>7</sup> / <sub>8</sub> "	19 <sup>7</sup> / <sub>8</sub> "
38R-4	35 <sup>1</sup> / <sub>8</sub> "	8 <sup>1</sup> / <sub>2</sub> "	9"	6 <sup>7</sup> / <sub>8</sub> "	25 <sup>3</sup> / <sub>4</sub> "
38R-4S	21 <sup>3</sup> / <sub>8</sub> "	21 <sup>3</sup> / <sub>8</sub> "	9"	15 <sup>3</sup> / <sub>4</sub> "	13 <sup>3</sup> / <sub>4</sub> "
38R-3L	19 <sup>1</sup> / <sub>8</sub> "	16 <sup>7</sup> / <sub>8</sub> "	9"	6 <sup>7</sup> / <sub>8</sub> " x 15 <sup>3</sup> / <sub>4</sub> "	15 <sup>3</sup> / <sub>4</sub> " x 6 <sup>7</sup> / <sub>8</sub> "
38R-5L	28 <sup>1</sup> / <sub>4</sub> "	28 <sup>1</sup> / <sub>4</sub> "	9"	6 <sup>1</sup> / <sub>4</sub> " x 22 <sup>5</sup> / <sub>8</sub> "	22 <sup>5</sup> / <sub>8</sub> " x 6 <sup>7</sup> / <sub>8</sub> "

## Ordering Matrix

Model	# of Lamps	Voltage	Inside Finish	Trim Finish
38R	1 = 1-Linear 2 = 2-Linear 3 = 3-Linear 4 = 4-Linear 4S = 4-Square 3L = 3-Corner 5L = 5-Corner	120 = 120V	B = Black W = White S = Silver CC = Custom	B = Black W = White S = Silver CC = Custom

Maximum Ambient temperature: 35°C

**Example:** 38R-3-B-W-120

38R-\_\_\_\_\_ - \_\_\_\_\_ - \_\_\_\_\_ - \_\_\_\_\_

## 1-Linear 38R-1



## 2-Linear 38R-2



## 3-Linear 38R-3



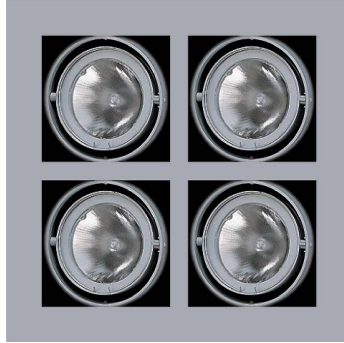
## 4-Linear 38R-4



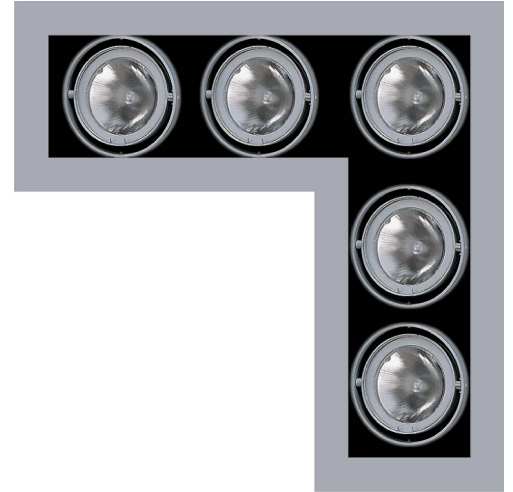
## Accessories

<b>GF41</b>	Colored Glass
<b>GF41-601</b>	Beam Softener
<b>GF41-600</b>	5°x50° Linear
<b>GF41-673</b>	50°x50° Spread
<b>GF41-702</b>	UV Blocking
<b>HD41</b>	Snoot
<b>XH41</b>	Cross Baffle

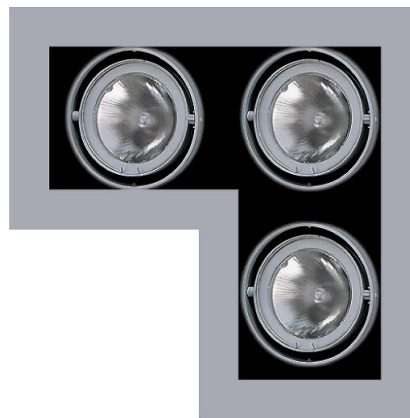
## 4-Square 38R-4S



## 5-Corner 38R-5L



## 3-Corner 38R-3L



**NOTE:** These fixtures are not IC or Chicago Plenum Rated.

\* For notes on dimming, please [click here](#).