

Job Name: Fixture Type: Qty:

Distribution by Times Square Lighting



Connector Strips

Times Square Lighting Connector Strips are custom built to specification and are used to distribute permanent lighting circuits throughout an installation. Exterior dimensions are 3" x 4" at a length of 2' minimum.

Connectors can be flush or pigtailed and come in a variety of styles. Can be mounted vertically or horizontally, dead hung or from moveable rigging systems. Ideal for theatres, television studios or any application requiring connections for portable lighting fixtures.

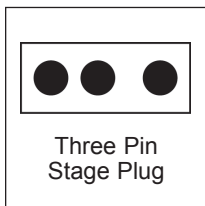
Features:

- Custom lengths and circuitry
- Variety of connector styles
- Connectors can be flush or pigtailed
- High visibility circuit numbering
- 18-gauge steel construction
- Mounting brackets included
- Shipped in 8' lengths max. wired through and folded
- DMX option available - consult factory.
- Pigtailed 18" standard. Other lengths available at additional cost.

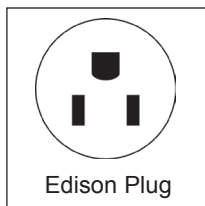
Manufactured in the USA - IBEW

PRODUCT LISTED
BY A NATIONALLY
RECOGNIZED
TESTING
LABORATORY

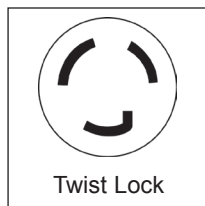
Connectors:



1 (flush)
5 (pigtail)



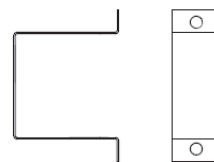
3 (flush)
4 (flush duplex)
7 (pigtail)



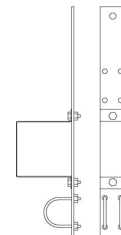
2 (flush 20A)
6 (pigtail 20A)
8 (flush 15A)

Mounting Hardware:

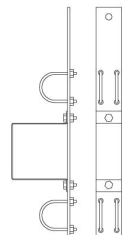
Wall/Ceiling Bracket
CS-5004



*Single Pipe
CSSP
(Cable Mount)
CSSPT
(Threaded Rod Mount)



*Double Pipe
CSDP (Cable Mount)
CSDPT
(Threaded Rod Mount)



**Mounting strap holds up to 2" O.D. pipe. Number of sets required is determined by length of connector strip. One 2-piece mounting set is included per every 5' of connector strip ordered. Pipe supplied by others.*

Ordering Information:

Note: All connector strips orders must be accompanied with signed CS Connector Strip Worksheets (available online).

Specify:	CS	-	-	-	-
	Model #	Length (ft)	# of Connectors	# of Circuits	Connector
Example:	CS	-24	-20	-9	-6
	Mounting Hardware	FEED: Stage Left / Center / FEED: Stage Right			
	CSSP	-Right			