



Manufactured in the USA - IBEW



Power

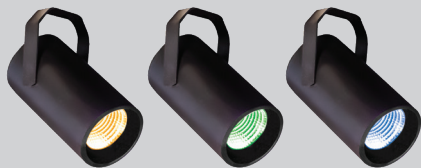
- Power Consumption: 25W
Max. Operating Temp.: 104°F (40°C) ambient
- 90 - 305 VAC, 50/60 Hz
- Do not install on a circuit containing a dimmer.

Optics

- 10°, 20°, 40° or 60°
field-changeable reflectors

Weight

- Weight: 2 lbs.



* Specification sheets are subject to change without notice.

MOSAIC Flood



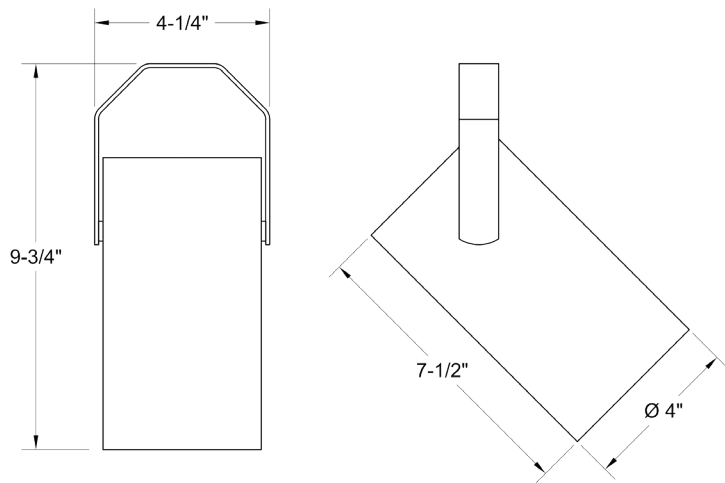
5 Holt Drive,
Stony Point, NY 10980
845-947-3034
www.tslight.com

Color Mixing - Tunable White

The Mosaic Flood features tunable color and a high CRI output. It also features tunable white from 1800K-8000K with a CRI of 90+ across the entire temperature range. Rich blues, ambers, reds, violets and greens can be added in gradients or can completely saturate the output of the light. Interchangeable reflectors allow beam angles between 10° and 60°. This fixture is perfect for retail applications such as car dealerships and clothing stores but is equally well suited for illuminating artwork or using it in an archtainment setting.

Key Features:

- 2000 Lumen Output
- 4 DMX Channels
- Tunable range: 1650 - 8000K tunable white.
- 90+ CRI
- Dimmable from 100 - 0.1% at constant CCT
- <2 MacAdam ellipse over 50,000 hour life
- On-board Bluetooth Low Energy (BLE) included in every fixture



Ordering Matrix

Model	Finish	Optics	Mounting	Dimming*
ACT20	B - Black W - White S - Silver CC - Custom Color	10 = 10° 20 = 20° 40 = 40° 60 = 60°	See Mounting Options	ECO = Lutron Ecosystem 010 = 010V Dimming BT = Bluetooth DX = DMX / RDM

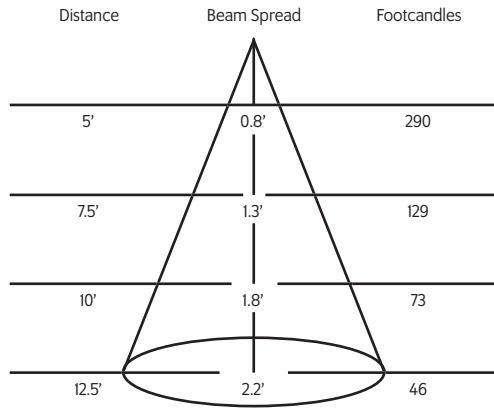
* Maximum Ambient Temperature 40° C

Example: ACT20-B-60-STA-010

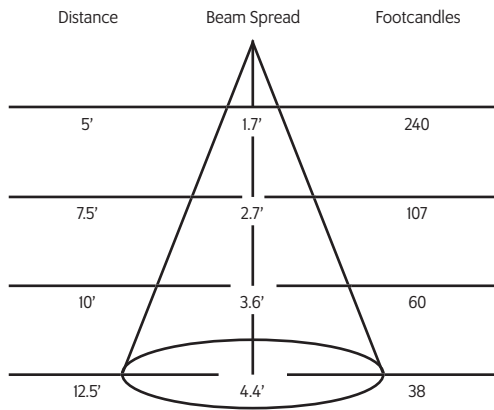
ACT20 - _____ - _____ - _____ - _____

Photometric Data 4000° K 95CRI

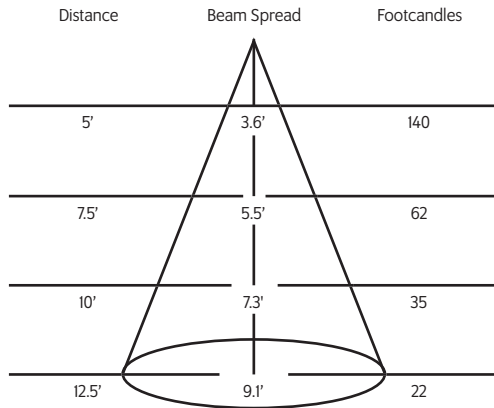
10° Spot Reflector



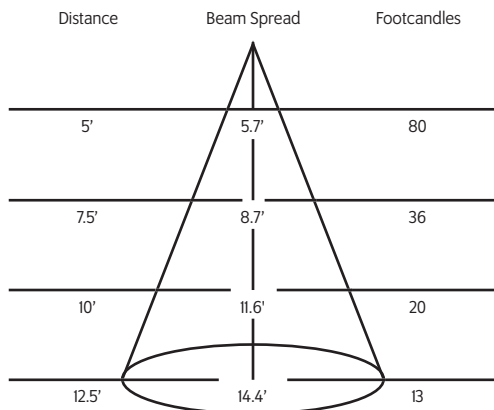
20° Spot Reflector



40° Medium Flood Reflector



60° Flood Reflector



Mounting Options

STA2

Circuit track adapter for Data Bus. Specification grade e-series track. 120V.

HSTA

Circuit track adapter for Data Bus. Specification grade e-series track. 277V.

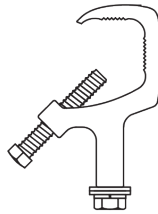
US1*

6 5/8" x 1 1/2" Unistrut adapter.



MN*

Medium duty pipe clamp for small to large fixtures. For pipes up to 2" O.D.



DXTC

Canopy mount with terminal block for DMX.

CM4*

Canopy mount (Bluetooth, 010V dimming, lutron ecosystem only).

PIG*

(Bluetooth, 010V dimming, lutron ecosystem only).

* Contact factory for wiring details.

Accessories

BD20

Barndoor

LV22

Full Size Louver

XL22

Full Size X Baffle Louver

XH22

Full Size X Baffle Hood

HD22

Hood/Snoot

X00517

Accessory Holder

LV18*

Honeycomb Louver

OF22-9101*

Smoothing Frost Filter

GF22-600*

5x50 Linear Lens

GF22-601*

Solite Softner

GF22-673*

50 x 50 Spread Lens

SC024

Safety Cable

* X00517 Required, not compatible with 10° reflector option.

Extension Wands

SP 12

12" Stem

SP 18

18" Stem

SP 24

24" Stem

SP X

Custom Length