



REFIT PAR Module



5 Holt Drive,
Stony Point, NY 10980
845-947-3034
info@tslight.com

The REFIT PAR Module is a LED kit that transforms your old PAR56 or PAR64 into an energy efficient fixture. Our REFIT kits will install into most long barrel PARS from the 1980's to present.

Please consult the factory before ordering.

Like all energy efficient LED's the REFIT kit will save both energy and labor costs due to the lower wattage and long life of the LED emitter.

The REFIT LED kit will dim on both leading and trailing edge dimmers.

Manufactured in the USA - IBEW



Construction

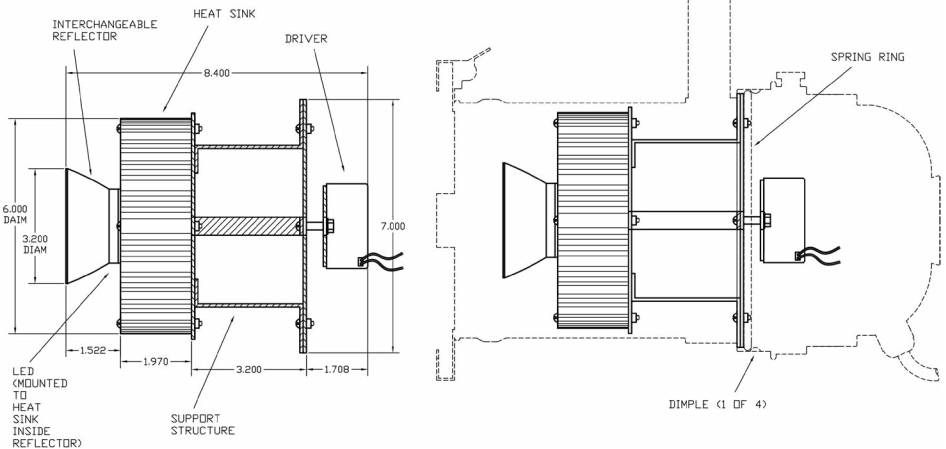
- Steel and Aluminum
- Extruded Aluminum heat sink
- Weight: 2 lbs.
- Passive cooling

Electrical

- Integral electronic driver
- 100-277V, 50/60Hz

Optics

- 12°, 19°, 33°, 40°, 48°, 55°, and 64°
Field - changeable reflectors



LED

- 2700K, 3000K, 3500K, 4000K, 5000K
- CRI: 80 Standard or 92 Optional
- Beam Angle: 12°, 19°, 33°, 40°, 48°, 55°, 64°
- Cree XLamp LED array
- No UV or IR

CRI	Total Wattage	Delivered Lumen	Efficacy (Lm/W)	CRI
80	80	9800	123	80

* Total wattage equals LED plus driver. Delivered lumen may vary depending on LED module, color temperature, optics, and accessories.
* Testing done with 4000K COB.

Dimming

- Trailing edge (ELV): 120V
- Leading edge (Triac): 120V
- Dims to 0.1% on most theatrical style rack mount leading edge dimmers.

Ordering Matrix

Model	Wattage	CRI	Color Temp	Type	Voltage	Optics	Dimming*
REF	50	80	27=2700K	56	120	12=12°	PH = Phase Dimming (Leading/Trailing Edge)†
	80	92	30=3000K	64	277	19=19°	
		35=3500K		33=33°			
		40=4000K		40=40°			
		50=5000K		48=48°			
		57=5700K		55=55°			
					64=64°		

Maximum ambient temperature: 35°C †120V Only
Maximum operating angle: 45° from vertical

* See "Notes on Dimming" on reverse

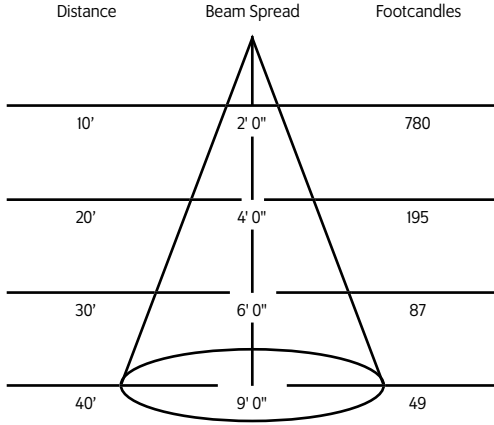
Example: REF-50-80-30-56-120-12-PH

REF - - - - -

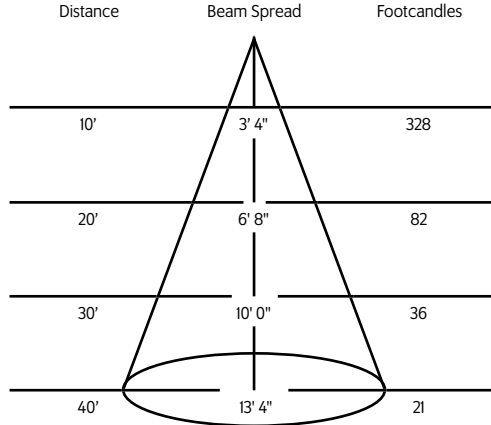
* Specification sheets are subject to change without notice.

Photometric Data

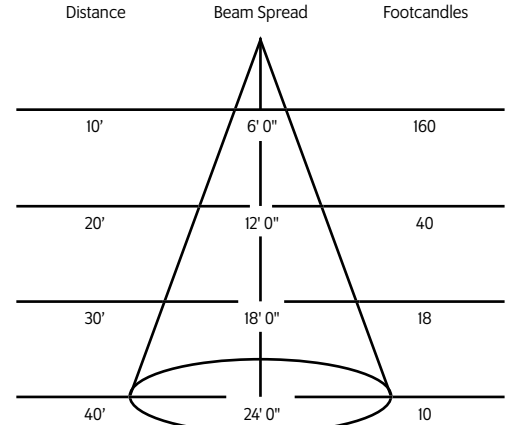
12° Spot Reflector



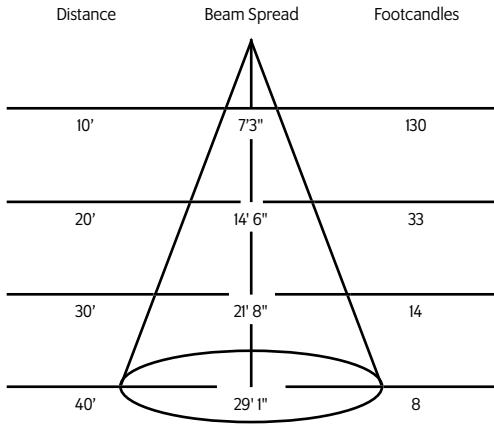
19° Spot Reflector



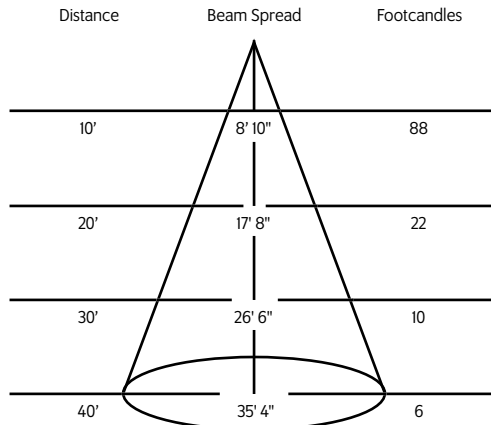
33° Narrow Flood Reflector



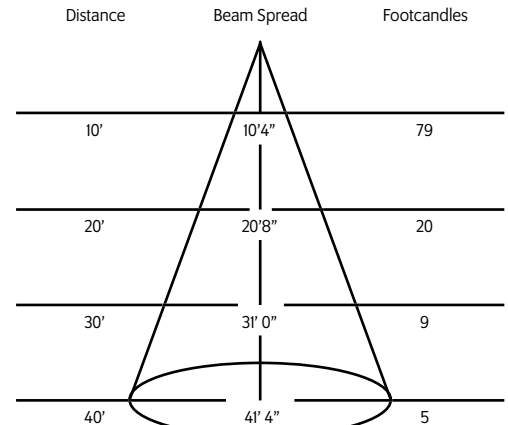
40° Flood Reflector



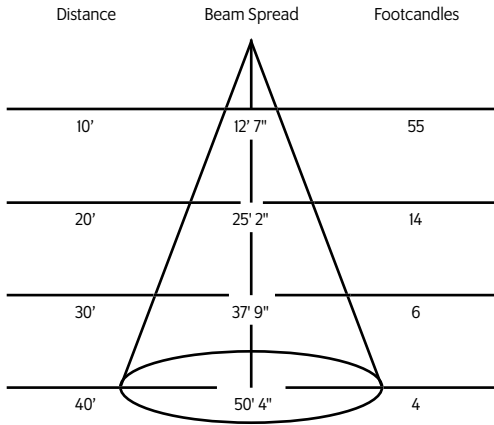
48° Wide Flood Reflector



55° Wide Flood Reflector



64° Wide Flood Reflector



* For notes on dimming, please [click here](#).