



### SPECIFY FINISH

- Natural Aluminum (-1)
- Black (-2)
- White (-3)

# GES ECO Track

1 Circuit / 1 Neutral

GLOBAL trac lighting track is engineered to be a durable, dependable, and simple-to install lighting solution. The track's extruded aluminum construction and continuously crimped conductor ensure mechanical strength and electrical reliability. The integral suspension rail and predrilled mounting holes of the track simplify the installation process.



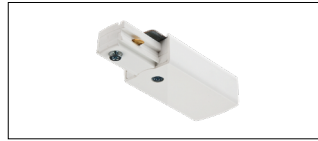
5 Holt Drive  
Stony Point, NY 10980  
845-947-3034  
www.tsilight.com

### FEATURES

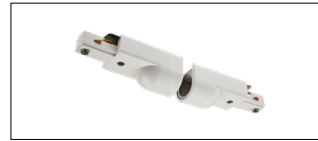
- Architectural Grade
- ISO 9002 Quality
- Low Profile, easy installation
- Integral Suspension Rail
- Copper connector / polycarbonate components
- UL Listed.
- 1 Circuit

DESCRIPTION	1-CIRCUIT
4' Track	GES204
8' Track	GES208
12' Track	GES212

### ACCESSORIES FOR GES TRACK INSTALLATION



**Live End**  
1-Circuit  
**GES11**



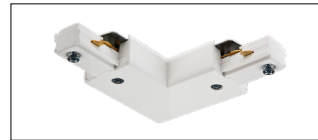
**Flexible Conduit Connection**  
1-Circuit  
**GES13-16**



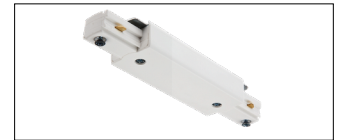
**Feedable "X" Connector**  
1-Circuit  
**GES36**



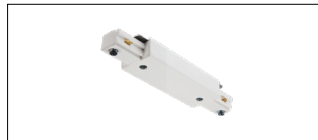
**Dead Ends**  
1-Circuit  
**GES41**



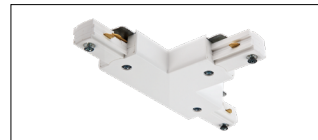
**Flexible Conduit Connection**  
1-Circuit  
**GES13 / GES16**



**Live Middle Feed**  
1-Circuit  
**GES14**



**Linear Coupler**  
1-Circuit  
**GES21**

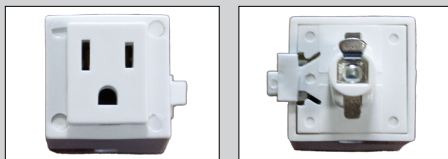


**Feedable "T" Connector**  
1-Circuit  
**GES40**



**Mono Point**  
1-Circuit **GES70**

### Convenience Outlet



\*Specification sheets are subject to change without notice.

## Mounting Component



### Cover Plate

Used to cover an outlet box.

**GES15**

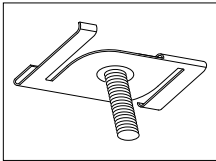


### Stem Mount Kit

Used to mount track.

*\* Custom lengths available. Please consult factory.*

**SK**



### SKBX-12

Grid Clip.

Color	1-Circuit
Black	GES15B
White	GES15W

Stem Length	1-Circuit
12"	SK12M
18"	SK18M
24"	SK24M
36"	SK36M

## TRACK CURRENT LIMITERS

Times Square Track Current Limiters are designed to provide an answer to energy limitations on wattage-per-foot requirements for lighting track installations. For more information, please see the Current Limiters specification sheet:

<http://www.tslight.com/resources/send/8-current-limiters/201-tsc-current-limiters>