

Manufactured in the USA - IBEW

PRODUCT LISTED
BY A NATIONALLY
RECOGNIZED
TESTING
LABORATORY

Features

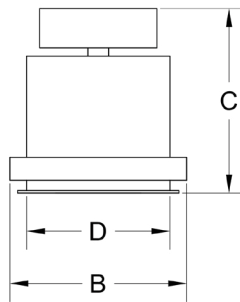
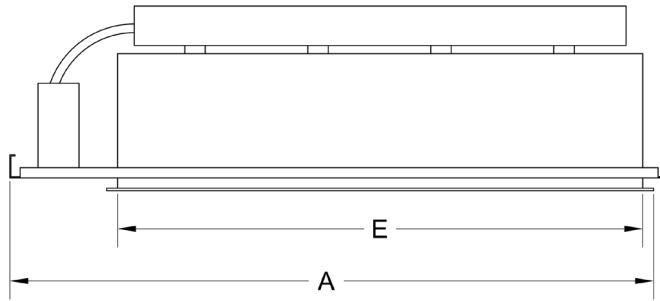
- Accepts PAR38 lamps and LEDs
- Available in 1 to 5-light - linear, square and corner configurations
- Blends into the ceiling and can be installed with or without trim
- Each lamp is individually mounted for pan and tilt.
- Lamp holders accept a variety of lenses and accessories
- Easy front re-lamping
- Thermal protector
- Adjustable trim with torsion springs for ceilings up to 2" thick
- Adjustable butterfly mounting brackets included
- Fully enclosed wiring compartment
- Black, white and silver trims available - custom colors upon request
- 120-volt

38R PAR38

Specification Sheet - New Construction



5 Holt Drive,
Stony Point, NY 10980
845-947-3034
info@tslight.com



Model #	Length	Width	Height	Ceiling Cut-Out	
	(A)	(B)	(C)	(D)	(E)
38R-1	14 ³ / ₈ "	8 ¹ / ₂ "	9"	6 ⁷ / ₈ "	8"
38R-2	21 ³ / ₈ "	8 ¹ / ₂ "	9"	6 ⁷ / ₈ "	13 ⁷ / ₈ "
38R-3	28 ¹ / ₄ "	8 ¹ / ₂ "	9"	6 ⁷ / ₈ "	19 ⁷ / ₈ "
38R-4	35 ¹ / ₈ "	8 ¹ / ₂ "	9"	6 ⁷ / ₈ "	25 ³ / ₄ "
38R-4S	21 ³ / ₈ "	21 ³ / ₈ "	9"	15 ³ / ₄ "	13 ³ / ₄ "
38R-3L	19 ¹ / ₈ "	16 ⁷ / ₈ "	9"	6 ⁷ / ₈ " x 15 ³ / ₄ "	15 ³ / ₄ " x 6 ⁷ / ₈ "
38R-5L	28 ¹ / ₄ "	28 ¹ / ₄ "	9"	6 ¹ / ₄ " x 22 ⁵ / ₈ "	22 ⁵ / ₈ " x 6 ⁷ / ₈ "

Ordering Matrix

Model	# of Lamps	Voltage	Inside Finish	Trim Finish
38R	1 = 1-Linear 2 = 2-Linear 3 = 3-Linear 4 = 4-Linear 4S = 4-Square 3L = 3-Corner 5L = 5-Corner	120 = 120V	B = Black W = White S = Silver CC = Custom	B = Black W = White S = Silver CC = Custom

Maximum Ambient temperature: 35°C

Example: 38R-3-B-W-120

38R-_____ - _____ - _____ - _____

1-Linear 38R-1



2-Linear 38R-2



3-Linear 38R-3



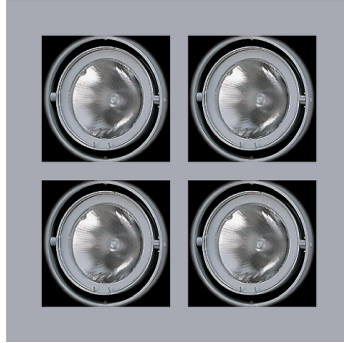
4-Linear 38R-4



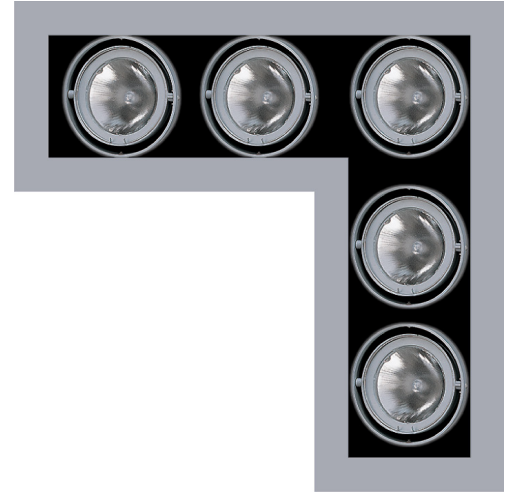
Accessories

GF41	Colored Glass
GF41-601	Beam Softener
GF41-600	5°x50° Linear
GF41-673	50°x50° Spread
GF41-702	UV Blocking
HD41	Snoot
XH41	Cross Baffle

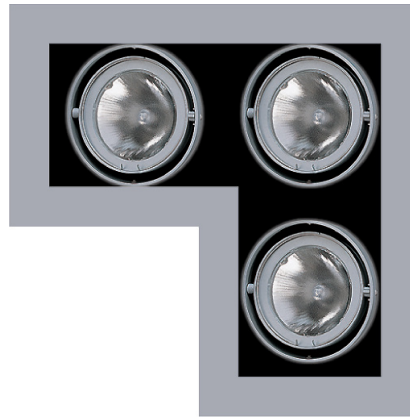
4-Square 38R-4S



5-Corner 38R-5L



3-Corner 38R-3L



NOTE: These fixtures are not IC or Chicago Plenum Rated.

* For notes on dimming, please [click here](#).