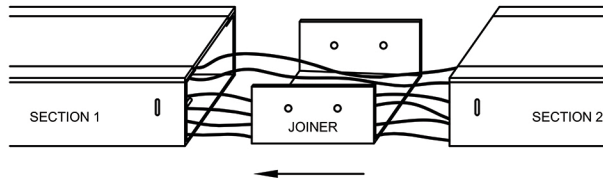


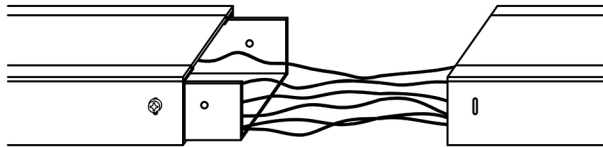
CONNECTOR STRIP INSTALLATION INSTRUCTIONS - SAVE THESE INSTRUCTIONS

JOINING CONNECTOR STRIP SECTIONS

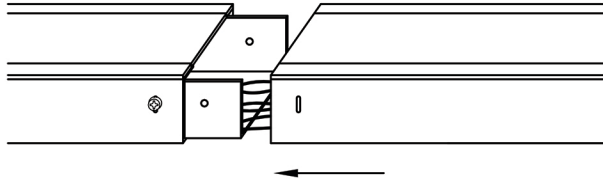
STEP 1: Install joiner to section 1 such that joiner sleeve nuts line up with section 1 slots.



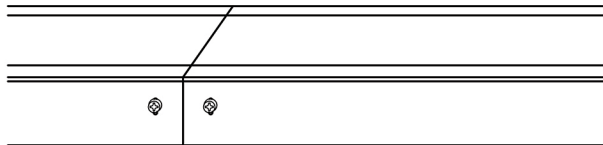
STEP 2: Attach joiner to first section with 3 screws provided. Do not tighten screws until last step.



STEP 3: Carefully fold excess wire into connector strip sections and install section 2 to joiner, taking care not to pinch any wires.



STEP 4: Secure section 2 to joiner sleeve with 3 remaining screws. Completely tighten all 6 screws. Repeat for subsequent sections.

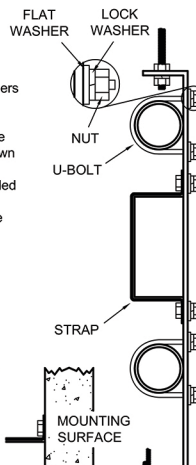


HANGING/MOUNTING CONNECTOR STRIP

NOTE: CONNECTOR STRIP WEIGHS APPROXIMATELY 4 LBS/FT (6 kg/m)

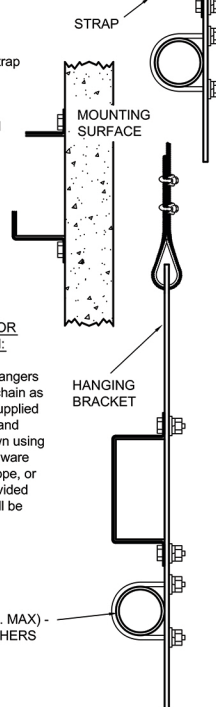
THREADED ROD INSTALLATION:

Install connector strip hangers to threaded rod as shown. Maximum threaded rod diameter: 7/16". Mount pipe and connector strip as shown using U-bolts, strap, and hardware provided. Threaded rod size and non-provided hardware selection shall be determined by others.



SURFACE MOUNT INSTALLATION:

Install connector strip strap to mounting surface as shown using hardware provided by others. Hardware selection and mounting method employed shall be determined by others.



CABLE, WIRE ROPE, OR CHAIN INSTALLATION:

Install connector strip hangers to cable, wire rope, or chain as shown with materials supplied by others. Mount pipe and connector strip as shown using U-bolts, strap, and hardware provided. Cable, wire rope, or chain size and non-provided hardware selection shall be determined by others.

1-1/2" PIPE (2" O.D. MAX) - PROVIDED BY OTHERS

MAKING ELECTRICAL CONNECTIONS

NOTE: A connector strip provided with a data output connector will have the connector mounted to a 2" x 4" enclosure. That enclosure will be mounted to the upper surface of the connector strip in close proximity to the electrical feed point.

