

Installation Instructions for the CELESTE™ Series Fixtures - SAVE THESE INSTRUCTIONS

OBSERVE ALL SAFETY AND OPERATING INSTRUCTIONS BELOW:

Caution! Read and understand these entire instructions before proceeding!

Warning! All electrical installations must be done according to local codes or the National Electric Code (NEC), whichever applies.

Warning! Risk Of Fire! MOST DWELLINGS BUILT BEFORE 1985 HAVE SUPPLY WIRE RATED FOR 60°C! This fixture requires supply wires rated for 75°C minimum. INSTALLATION MUST BE PERFORMED BY QUALIFIED PERSONNEL ONLY!

Warning! Disconnect power at circuit breaker or fuse box BEFORE installing the fixture.

Warning! Do not connect this luminaire to an electrical system that does not provide a means for equipment grounding. INSTALLING A LUMINAIRE INTO AN ELECTRICAL SYSTEM NOT PROVIDED WITH A GROUNDING MEANS COULD ALLOW ALL METAL PARTS OF THE LUMINAIRE TO CARRY ELECTRICAL CURRENT IF ANY OF THE WIRES, WIRE CONNECTIONS, SPLICES OR COMPONENTS BECOME BROKEN, CUT, LOOSE, OR OTHERWISE DAMAGED DURING INSTALLATION OR NORMAL USE. THIS CONDITION COULD LEAD TO ELECTRICAL SHOCK AND COULD CAUSE SERIOUS INJURY OR DEATH! THE SAME WARNING APPLIES FOR AN IMPROPERLY GROUNDED LUMINAIRE!

Warning! Do not suspend this luminaire by the electrical feed wires. Mount fixture according to the instructions below. FAILURE TO PROPERLY INSTALL THE LUMINAIRE MAY RESULT IN THE LUMINAIRE FALLING, THEREBY CAUSING PERSONAL INJURY, AS WELL AS THE DANGER OF ELECTRICAL SHOCK OR FIRE!

Warning! Use the Safety Cable supplied with this fixture as outlined in the instructions below.

Warning! Do not use this fixture if there are any damaged wires, cords or other parts.

Caution! When installing this luminaire on a circuit containing a dimmer, make certain that the fixture has a dimmable driver. Insure that the dimmer is properly rated for the load (wattage) and is of the correct type (leading edge, trailing edge, etc). If this luminaire contains a non-dimmable driver, DO NOT install it on a circuit containing a dimmer. Damage to the luminaire may result.

Caution! The LED is a factory replacement item and there are NO user serviceable parts inside the control/power box.

Caution! This unit is to be installed in DRY locations only. Always store indoors.

Caution! Do not use this fixture in any way for which it was not intended.

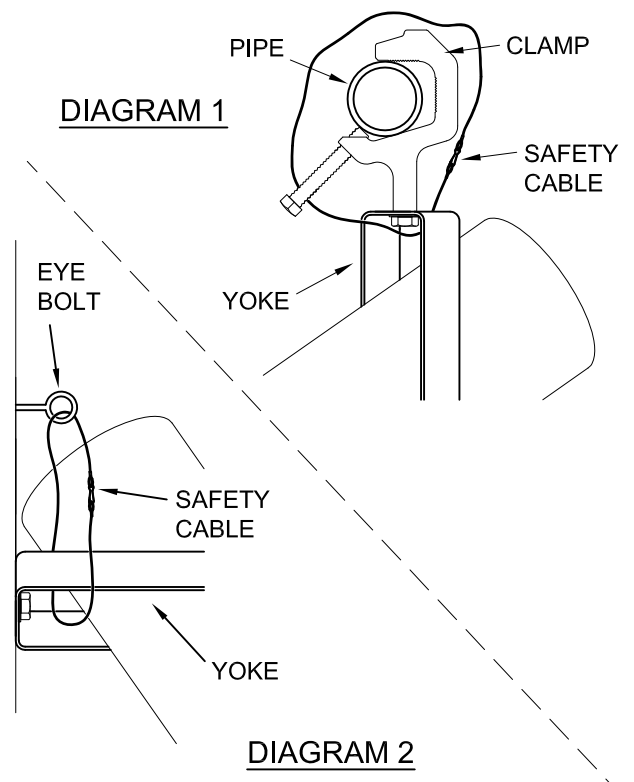
Caution! Keep fixture vent slots free from dust and debris.

Caution! Maximum ambient operating temperature is 40°C (104°F).

INSTALLATION AND WIRING INSTRUCTIONS FOR YOKE MOUNTING:

Warning! Read and understand these entire instructions, including the SAFETY AND OPERATING INSTRUCTIONS above before proceeding!

1. Attach the yoke to a suitable surface, pipe or structure using hardware (by others) appropriate for the 15 pound load (20 foot-pounds torque if the unit is mounted to a vertical surface). Use at least 2 holes on the yoke to prevent rotation (unless rotation is desired).
2. For clamp mounting: Attach the safety cable such that the cable is looped through the yoke and around the pipe (or other adequate support structure) as shown in Diagram 1. For surface mounting, it is recommended that an eyebolt (or equivalent) (by others) be securely attached near the yoke and that the cable is looped through the yoke and through the eyebolt as shown in Diagram 2.
3. If the unit is cord-and-plug connected, simply plug the fixture into an appropriate receptacle rated for the voltage and amperage indicated on the fixture. If the unit is to be hard wired, follow the remaining steps, otherwise the installation is complete.
4. Route the feeder cable to an appropriate electrical outlet box.
5. Make electrical connections according to the list below:
 - BLACK to HOT,
 - WHITE to NEUTRAL,
 - GREEN to GROUND, and, if required for 0-10V dimming,
 - VIOLET to [+] (usually violet),
 - GREY to [-] (usually grey).



NOTE: All fixture wires have insulation rated for 600V and are permitted to occupy the same enclosure (electrical outlet box).