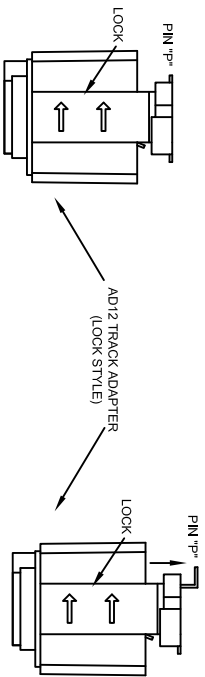




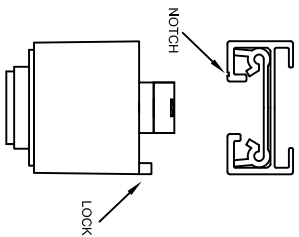
THESE INSTRUCTIONS ARE FOR THE PROPER INSTALLATION & USE OF THE AD12 TRACK ADAPTER. THERE ARE 2 TYPES OF AD12 TRACK ADAPTERS, THE RETRACTABLE LOCK STYLE AND THE RETRACTABLE SLEEVE STYLE. USE THE DIAGRAMS BELOW TO DETERMINE WHICH ADAPTER YOU HAVE, & FOLLOW THE INSTRUCTIONS ACCORDINGLY.

## RETRACTABLE LOCK STYLE



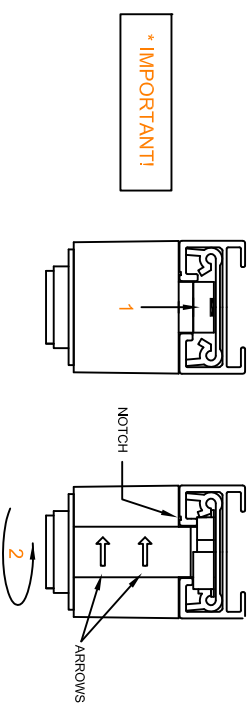
### STEP 1:

With a screwdriver or pliers, push PIN "P" down for circuit 1, or up for circuit 2.  
NOTE: Single circuit track is always circuit 1. CAUTION! FORCING A TRACK ADAPTER INTO SINGLE CIRCUIT TRACK WHEN IT IS SET UP FOR CIRCUIT 2 WILL DAMAGE BOTH THE TRACK AND THE ADAPTER!



### STEP 2:

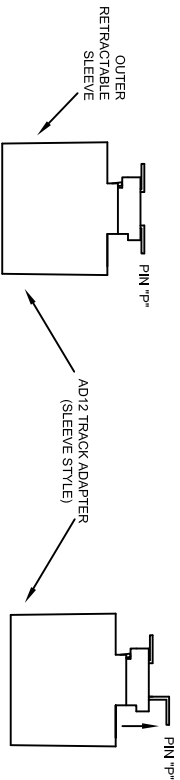
Align the track adapter such that the LOCK is on the Opposite Side of the track as the NOTCH.



### STEP 3:

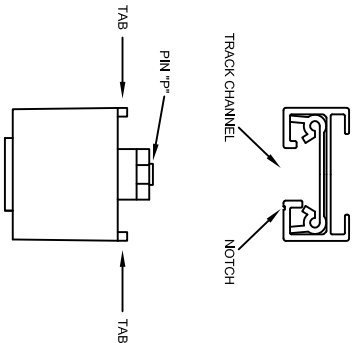
\* CAUTION! FAILURE TO FOLLOW THIS STEP EXACTLY MAY PERMANENTLY DAMAGE THE ADAPTER!  
Insert the track adapter into the track (the lock will automatically retract) and rotate adapter 90° in the direction indicated by the ARROWS. Insure that the LOCK TOP is fully positioned inside the track channel. This will lock the track adapter in place. NOTE: The ARROWS on the lever should be pointing towards the NOTCH after installation.

## RETRACTABLE SLEEVE STYLE



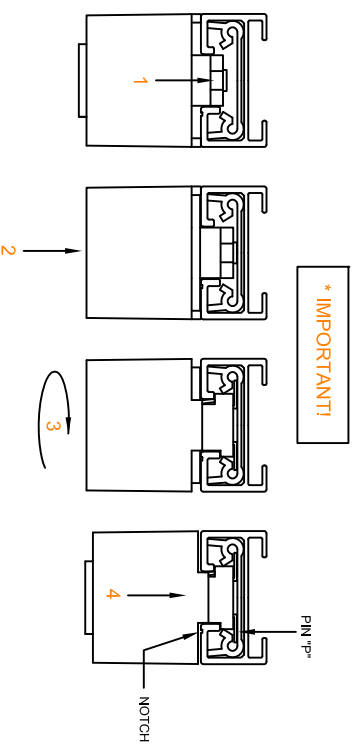
### STEP 1:

With a screwdriver or pliers, push PIN "P" down for circuit 1, or up for circuit 2.  
NOTE: Single circuit track is always circuit 1. CAUTION! FORCING A TRACK ADAPTER INTO SINGLE CIRCUIT TRACK WHEN IT IS SET UP FOR CIRCUIT 2 WILL DAMAGE BOTH THE TRACK AND THE ADAPTER!



### STEP 2:

Align the track adapter with the TABS straddling the TRACK CHANNEL as shown above.



### STEP 3:

\* CAUTION! FAILURE TO FOLLOW THIS STEP EXACTLY MAY PERMANENTLY DAMAGE THE ADAPTER!  
Insert track adapter into track, then push fixture upwards toward track such that track adapter plunges into its outer sleeve approximately 1/8". While maintaining upwards pressure, rotate adapter 90° clockwise (PIN "P" will be situated under the notch). Release the sleeve and insure that the TABS are fully positioned inside the TRACK CHANNEL. This will lock the track adapter in place.