

**PCT (0-10V & BLUETOOTH CONTROL) FLUSH MOUNT INSTALLATION INSTRUCTIONS**

**IMPORTANT SAFETY INSTRUCTIONS!** Read and understand these instructions before using or installing the fixture. All electrical installations must be done according to local codes or the National Electric Code (NEC), whichever applies. **WARNING RISK OF FIRE! MOST DWELLINGS BUILT BEFORE 1985 HAVE SUPPLY WIRE RATED FOR 60°C!** Some fixtures require supply wires rated for more than 60°C. Installation must be performed by qualified personnel only!

Wiring Instructions

**WARNING:** Disconnect power at circuit breaker or fuse box **BEFORE** installing the fixture.

**WARNING:** DO NOT connect this luminaire to an electrical system that does not provide a means for equipment grounding.

**WARNING:** INSTALLING A LUMINAIRE INTO AN ELECTRICAL SYSTEM NOT PROVIDED WITH A GROUNDING MEANS COULD ALLOW ALL METAL PARTS OF THE LUMINAIRE TO CARRY ELECTRICAL CURRENT IF ANY OF THE WIRES, WIRE CONNECTIONS, SPLICES OR COMPONENTS BECOME BROKEN, CUT, LOOSE, OR OTHERWISE DAMAGED DURING INSTALLATION OR NORMAL USE. THIS CONDITION COULD LEAD TO ELECTRICAL SHOCK AND COULD CAUSE SERIOUS INJURY OR DEATH! THE SAME WARNING APPLIES FOR AN IMPROPERLY GROUNDED LUMINAIRE!

**WARNING:** DO NOT suspend luminaire by the wires. Mount to an electrical box using the instructions supplied with the canopy or other mounting means acceptable to local codes or the National Electric Code (NEC). Insure that the electrical box is properly attached to the building structure using a means acceptable to local codes or the National Electric Code (NEC). FAILURE TO PROPERLY INSTALL THE LUMINAIRE MAY RESULT IN THE LUMINAIRE FALLING, THEREBY CAUSING PERSONAL INJURY, AS WELL AS THE DANGER OF ELECTRICAL SHOCK OR FIRE!

**STEP 1:**

With the yellow wire nuts provided, attach the provided 1' fixture wires to the feed wires in the electrical box:  
BLACK to HOT, WHITE to NEUTRAL, GREEN to GROUND, and, if required use the table below for control wiring connections:

**CONTROL WIRING:**

**0-10V DIMMING**

|                   |                    |
|-------------------|--------------------|
| DIMMER WIRE COLOR | CONTROL WIRE COLOR |
| VIOLET            | CONNECTS TO VIOLET |
| GREY              | CONNECTS TO GREY   |

**0-10V VARIABLE WHITE**

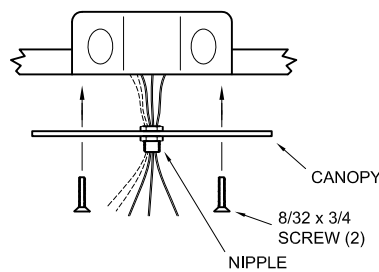
|                       |                    |
|-----------------------|--------------------|
| 2ND DIMMER WIRE COLOR | CONTROL WIRE COLOR |
| VIOLET                | CONNECTS TO BLUE   |
| GREY                  | CONNECTS TO WHITE  |

**BLUETOOTH CONTROL**

NO CONTROL WIRE HOOKUP REQUIRED

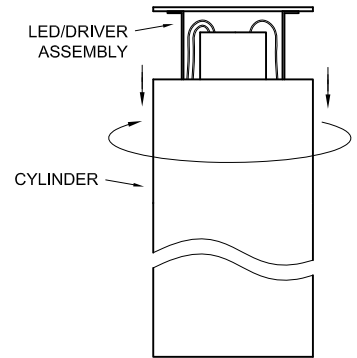
**STEP 2:**

Insert the fixture wires through the canopy nipple as shown and attach the canopy to the electrical box with the provided 8-32 x 3/4 screws.



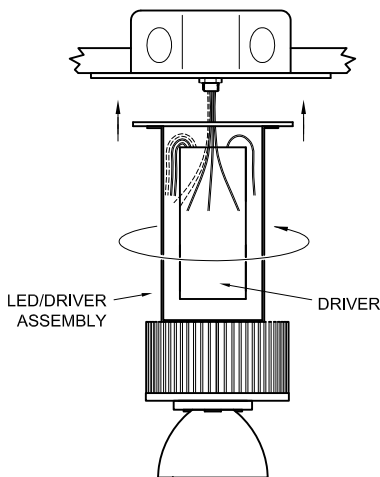
**STEP 3:**

Turning counter-clockwise, *carefully* unscrew the cylinder from the LED/driver assembly as shown, and set the cylinder aside.



**STEP 4:**

Turning clockwise, *carefully* thread the LED/driver assembly onto the nipple as shown.



**STEP 5:**

With the blue wire nuts provided, connect each fixture wire to the appropriate wire in the LED/driver assembly:  
BLACK to BLACK from driver, WHITE to WHITE from driver, GREEN to GREEN, and, if required use the table below for control wiring connections:

**CONTROL WIRING:**

NOTE: *Individually* tape off and isolate all unused control wires. Do not allow the tips of these wires to come in contact with each other, any other data connection points, GROUND, or anything electrically connected to GROUND!

|                    |                    |
|--------------------|--------------------|
| FIXTURE WIRE COLOR | CONTROL WIRE COLOR |
| VIOLET             | CONNECTS TO VIOLET |
| GREY               | CONNECTS TO GREY   |

|                    |   |
|--------------------|---|
| FIXTURE WIRE COLOR | CONTROL WIRE COLOR                            |
| BLUE               | CONNECTS TO BLUE                              |
| WHITE              | CONNECTS TO WHITE ( <b>NOT</b> WHITE/ORANGE!) |

**STEP 6:**

Turning clockwise, *carefully* thread the cylinder onto the LED/driver assembly as shown. Make certain not to cross thread the 2 parts!

