



# Cornerstone Series



Ideal for schools, houses of worship, malls and hotels where a high ceiling line requires a compact, architectural fixture. The Cornerstone was designed to mount snug, vertically wall-to-wall, or horizontally ceiling-to-wall. The Cornerstone can be ordered as a single cell or multiple cell housing. Numerous lumen packages, color temperatures and beam spreads are available.

5 Holt Drive  
Stony Point, NY 10980  
845-947-3034  
info@tslight.com

Black, White, Silver and Bronze finishes are standard. Custom colors are available upon request. We do follow the RAL color chart.

Manufactured in the USA - IBEW

PRODUCT LISTED  
BY A NATIONALLY  
RECOGNIZED  
TESTING  
LABORATORY

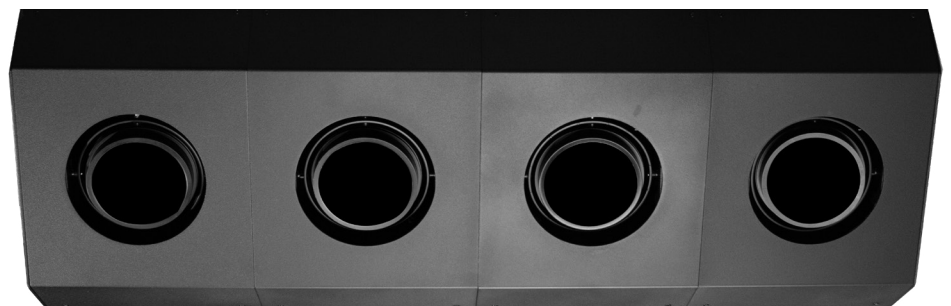
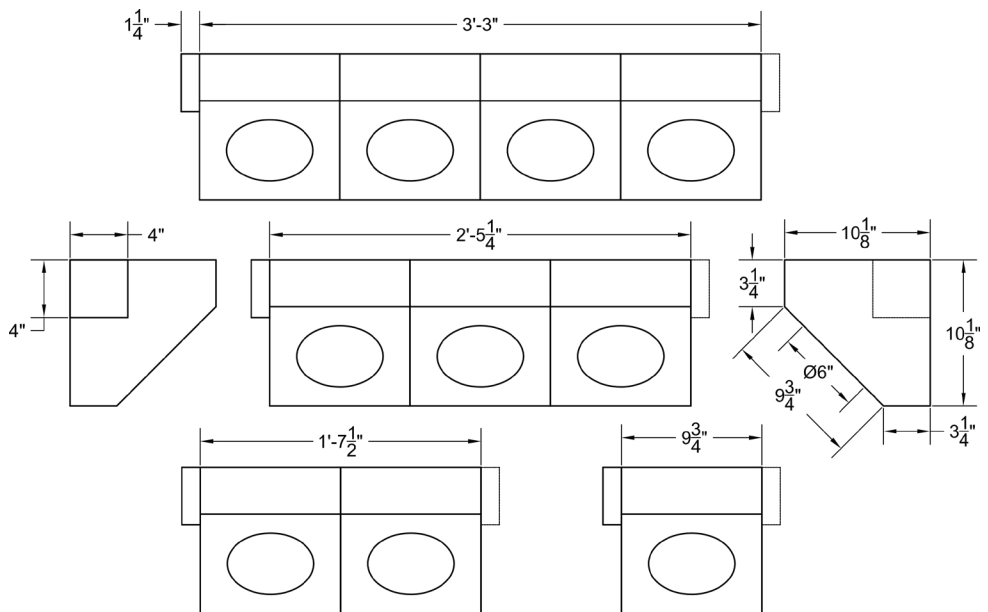


## Features

- 100,000 Hour life per LED
- 20°, 40°, and 60° Field-changeable reflectors
- **Choice of color temperatures:** 2700° K, 3000°K, 3500°K, 4000°K, 5000°K, 5700°K, 6500°K
- Each LED is individually mounted for up to 15° pan and tilt
- Accepts a variety of lenses and accessories.
- Fully enclosed wiring compartment
- Black, white, silver and bronze available - custom colors upon request

## Dimming

- Trailing edge (ELV): 120V / 277V
- Leading edge (Triac): 120V only
- 0-10V: 120V / 277V



## LED

- Cree XLamp LED array
- **Color temp options:** 2700° K, 3000°K, 3500°K, 4000°K, 5000°K, 5700°K, 6500°K
- CRI: 80 standard or 92 optional
- Lumen maintenance: 90% of initial lumen output at 33,000 hours on LM-80 testing
- No UV or IR

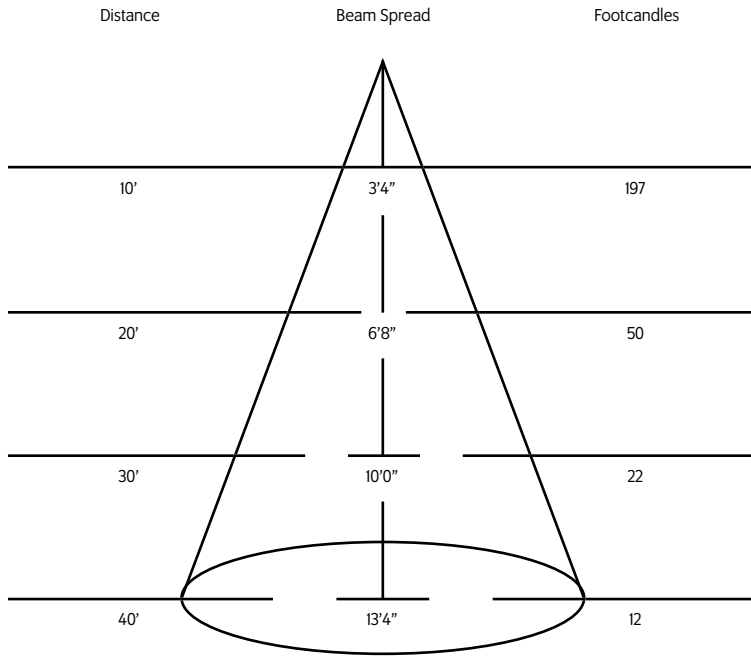
Model	CRI	Total Wattage	Lumens	Efficacy (Lm/W)
CO41	92	39	4100	105
CO47	92	43	4700	109
CO50	80	39	5000	128
CO53	92	52	5300	102
CO56	80	43	5600	130
CO62	80	52	6200	119

\*Specification sheets are subject to change without notice.

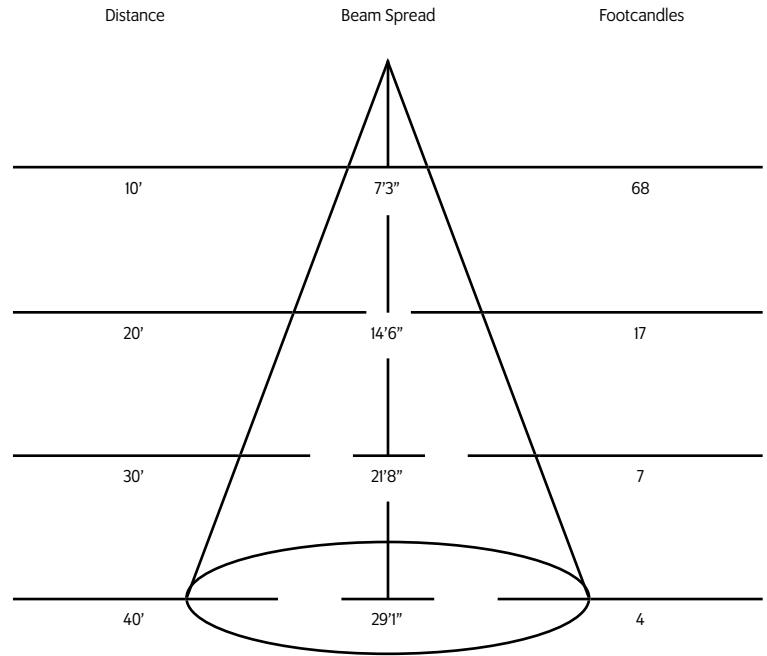
## Photometric Data

Results for 5,000 Lumen Output. For other Lumen outputs, use the other lumen output multipliers chart.

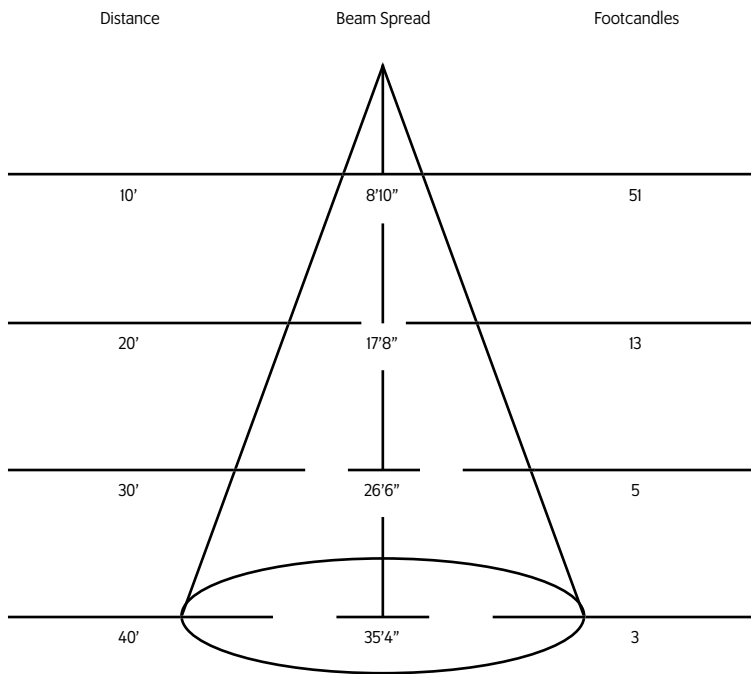
### 20° Spot Reflector



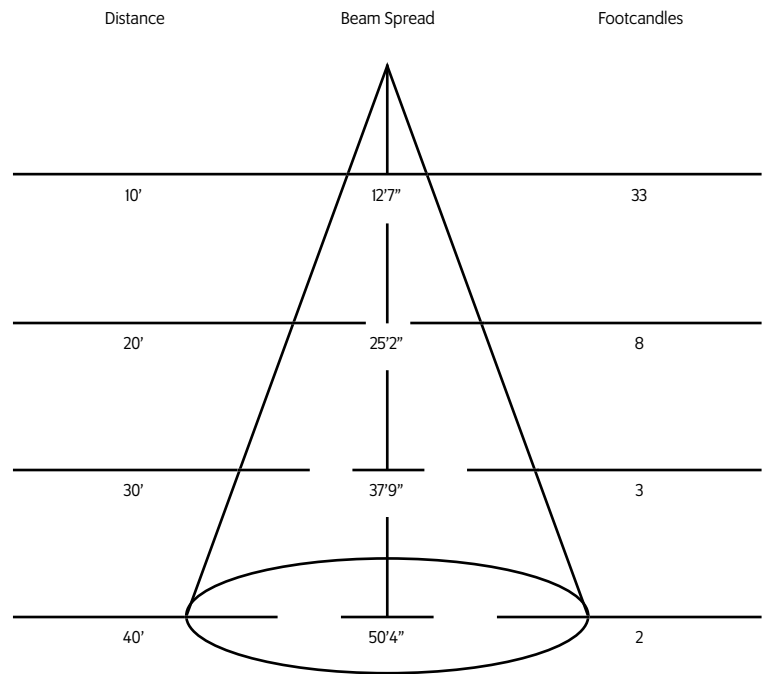
### 40° Spot Reflector



### 48° Spot Reflector



### 64° Spot Reflector



## Other Lumen Output Multipliers

FOR 80 CRI LUMEN OUTPUT	FOOTCANDLES
5600	1.12
6200	1.24

FOR 90 CRI LUMEN OUTPUT	FOOTCANDLES
4100	.82
4700	.94
5300	1.06

## HOW TO SPECIFY:

MODEL	LUMENS	NUMBER OF SEGMENTS
CO	<b>41</b> = 4100* <b>47</b> = 4700* <b>50</b> = 5000** <b>53</b> = 5300* <b>56</b> = 5600** <b>62</b> = 6200**	<b>1</b> = 1-Linear <b>2</b> = 2-Linear <b>3</b> = 3-Linear <b>4</b> = 4-Linear
CRI	COLOR TEMPERATURE	FIXTURE FINISH
<b>80</b> <b>92</b>	<b>27</b> = 2700°K <b>30</b> = 3000°K <b>35</b> = 3500°K <b>40</b> = 4000°K	<b>B</b> = Black <b>W</b> = White <b>S</b> = Silver <b>Z</b> = Bronze <b>CC</b> = Custom
VOLTAGE	WIRING SCHEME	JUNCTION BOX LOCATION
<b>120</b> <b>277</b>	<b>A</b> = Alternating Wiring <b>G</b> = Gang Wiring <b>I</b> = Individually Wired <b>C</b> = Custom Wiring (Consult Factory)	<b>L</b> = Left <b>R</b> = Right
REFLECTOR	DIMMING †	ACCESSORIES
<b>20</b> = 20° <b>40</b> = 40° <b>48</b> = 48° <b>60</b> = 60°	<b>TE</b> = Trailing Edge*** <b>LE</b> = Leading Edge <b>010</b> = 0-10V <b>ND</b> = Non-Dimming	<b>LV14</b> = Louver <b>FX12-100</b> = Diffusion <b>FX12-26</b> = Red Filter <b>FX12-80</b> = Blue Filter <b>FX12-64</b> = Light Blue Filter <b>FX12-90</b> = Green Filter <b>FX12-21</b> = Amber <b>FX12-10</b> = Yellow <b>FX12-33</b> = Pink

Maximum ambient temperature: 35°C

\* 92 CRI Only \*\* 80 CRI Only \*\*\* 120V Only

† See "Notes on Dimming" below

**EXAMPLE:** C050-2-80-30-B-120-G-L-40-LE-LV14

MODEL	LUMENS	NUMBER OF LAMPS	CRI	COLOR TEMPERATURE	FIXTURE FINISH	VOLTAGE	WIRING SCHEME	J-BOX	REFLECTOR	DIMMING	ACCESSORIES

\* For notes on dimming, please [click here](#).